

# WILDER WATERWAYS

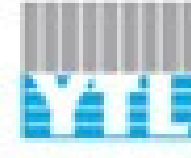
FINAL PROJECT SUMMARY 2020-2025



**Avon**  
Wildlife Trust



**WESSEX**  
**WATER**  
FOUNDATION



**Wessex Water**  
YTL GROUP

**FOR YOU. FOR LIFE.**

IT STARTED WITH A  
SURVEY...

BART COMPLETED A LAND YEO  
RIVER WALKOVER SURVEY IN 2020.

THEY COVERED THE WHOLE  
LENGTH OF THE RIVER - 20KM -  
FROM SOURCE TO SEA



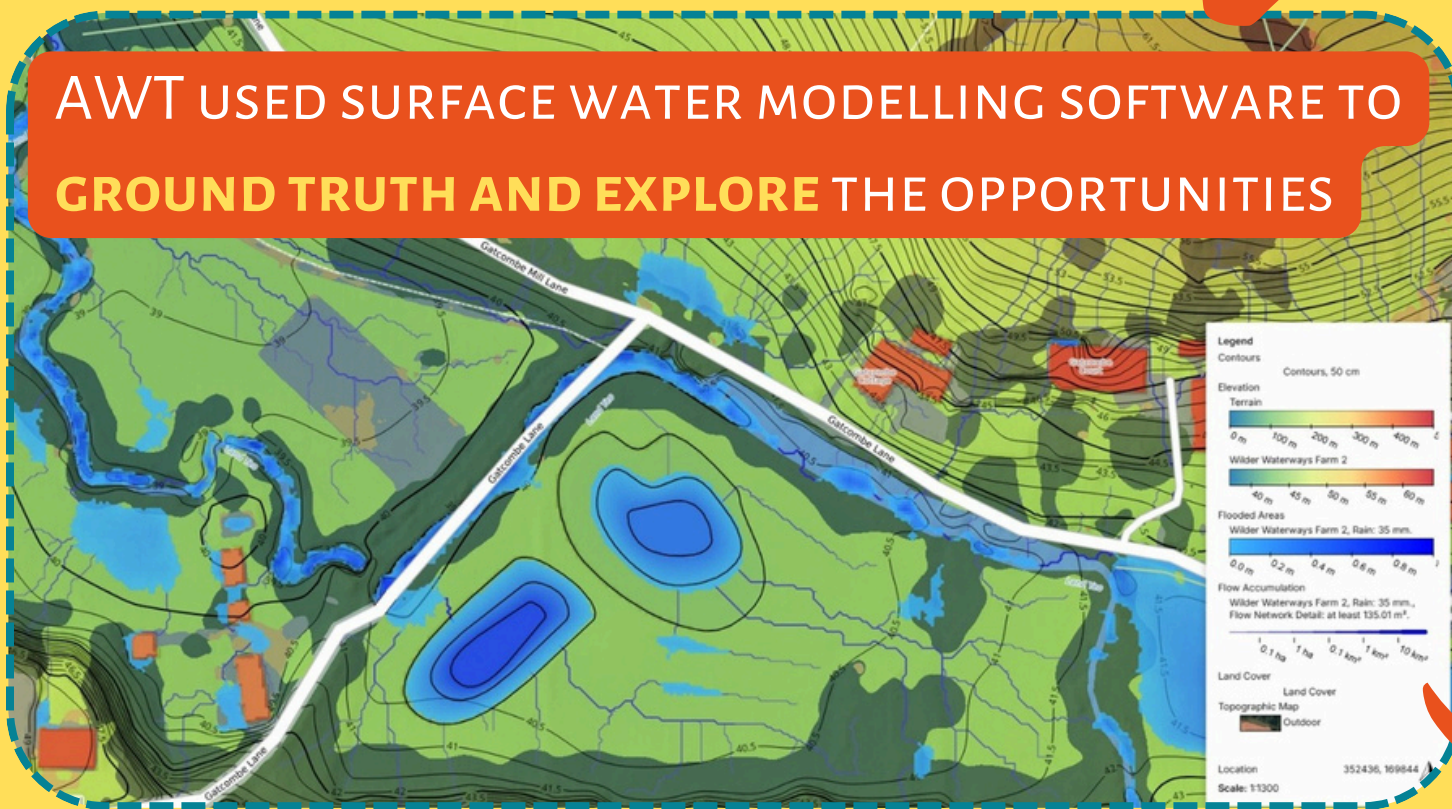
THEY **BUILT A STORYMAP** HIGHLIGHTING KEY OPPORTUNITIES FOR HABITAT CREATION, ENHANCEMENT AND WATER QUALITY IMPROVEMENTS

BART'S FARM ADVISORS **VISITED 13 LANDOWNERS AND FARMERS** TO TALK ABOUT THE RIVER AND HOW THEIR LAND MANAGEMENT COULD HELP IMPROVE ITS NATURAL CAPITAL...



...AND **CREATED 4 WHOLE FARM PLANS** IDENTIFYING OPPORTUNITIES

AWT USED SURFACE WATER MODELLING SOFTWARE TO **GROUND TRUTH AND EXPLORE THE OPPORTUNITIES**



AND TOGETHER AWT AND BART **ENGAGED DIRECTLY WITH OVER 500 PEOPLE** THROUGH RIVERBLITZ EVENTS, PRACTICAL VOLUNTEERING DAYS, AND WALKS AND TALKS



WE ALSO HELPED **RESTORE AND MAINTAIN OVER 13.5KM OF DITCHES** ON TICKENHAM, NAILSEA & KENN MOOR SSSI

